

Tradicijska arhitektura – predavanje

Doc.dr.sc. Katja Marasović dipl.ing.arh.

Mediterranski centar za graditeljsko nasljeđe

Arhitektonski fakultet, Sveučilište u Zagrebu

Bosanska 4, 21 000 Split

Katedra za graditeljsko nasljeđe

Fakultet građevinarstva, arhitekture i geodezije, Sveučilište u Splitu

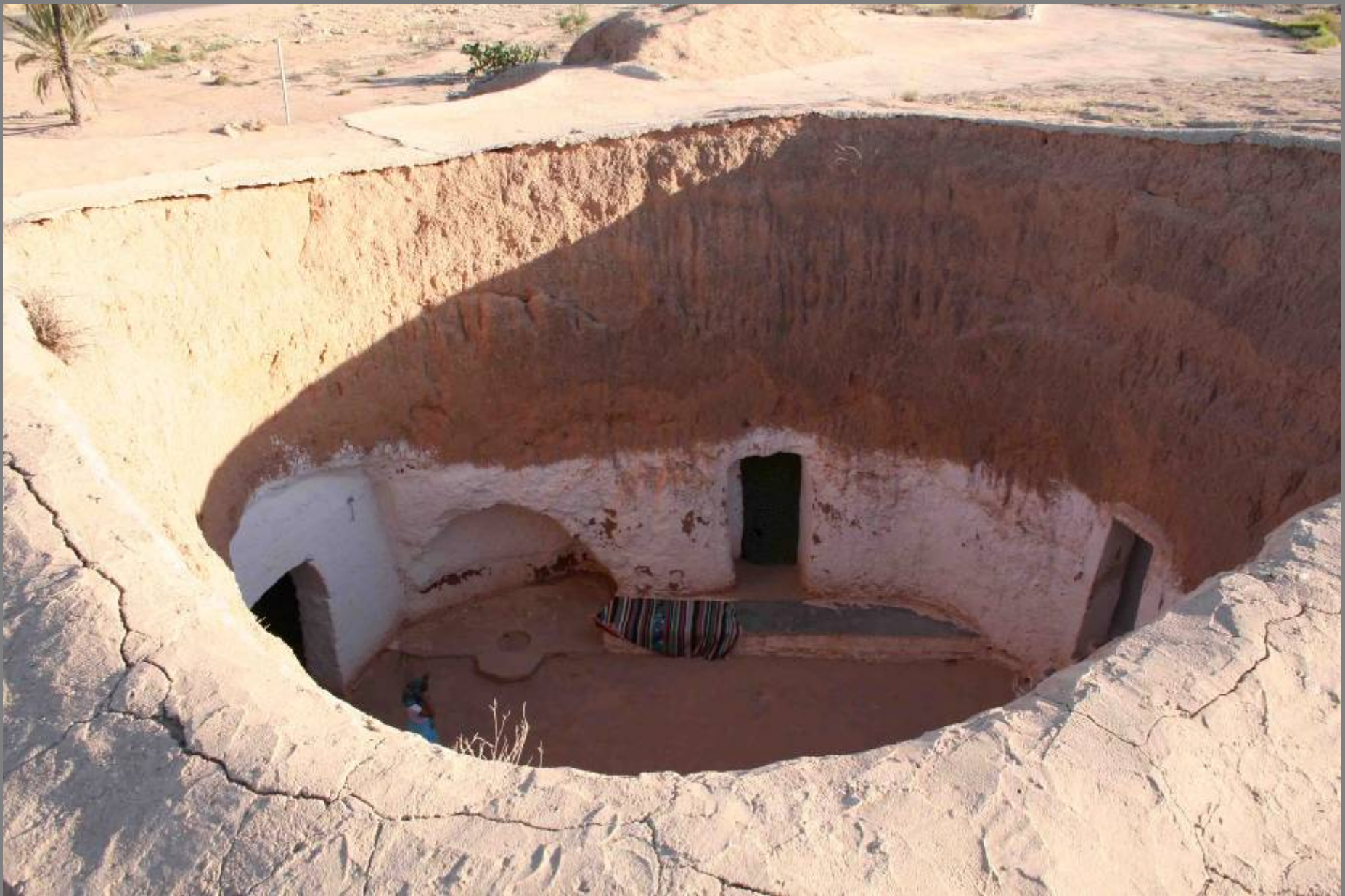
Matice Hrvatske 15, 21 000 Split

tel./fax.: +385 21 360 082



OSOBITOSTI TRADICIJSKE ARHITEKTURE

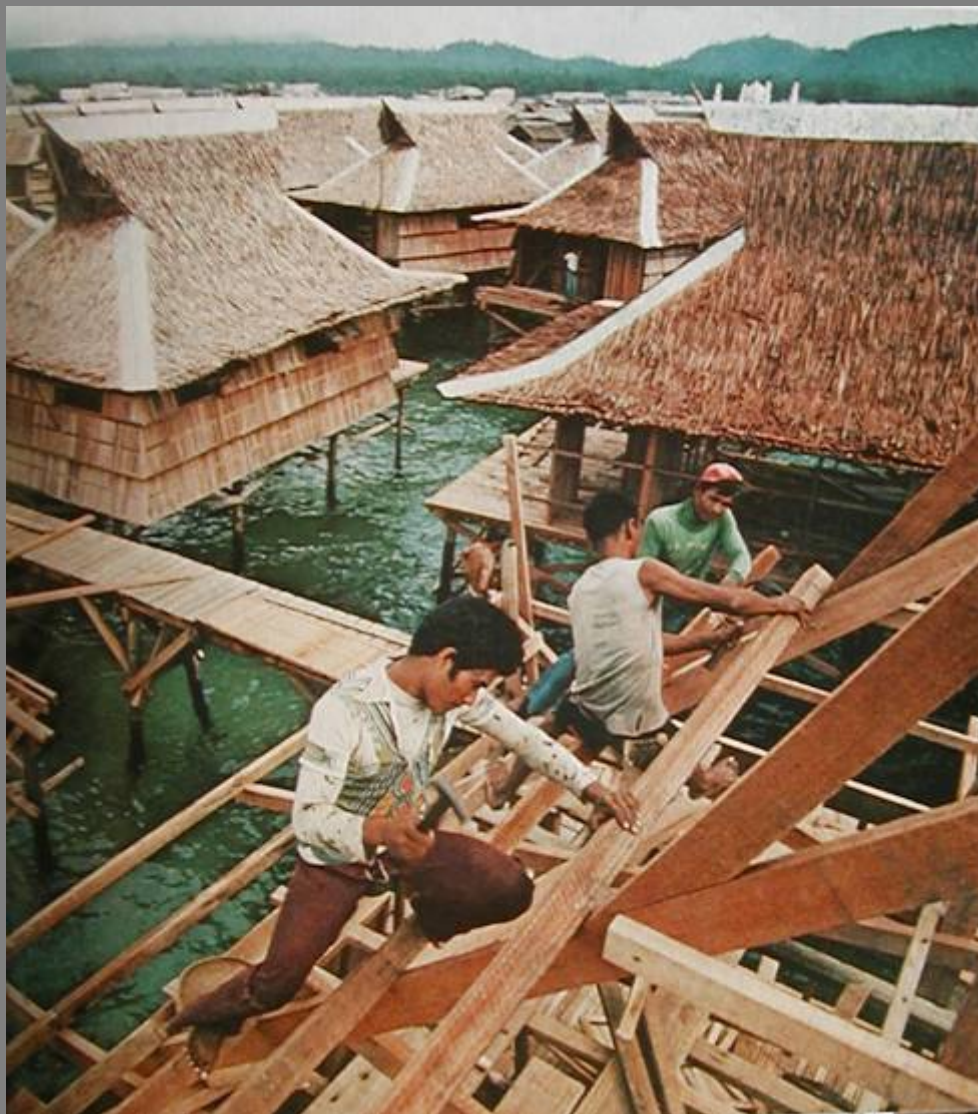
ŠTO JE TRADICIJSKA ARHITEKTURA ?



Matmata, Tunis, Berberske nastambe



Matmata, Tunis, Berberske nastambe



Sojenice – kuće na vodi

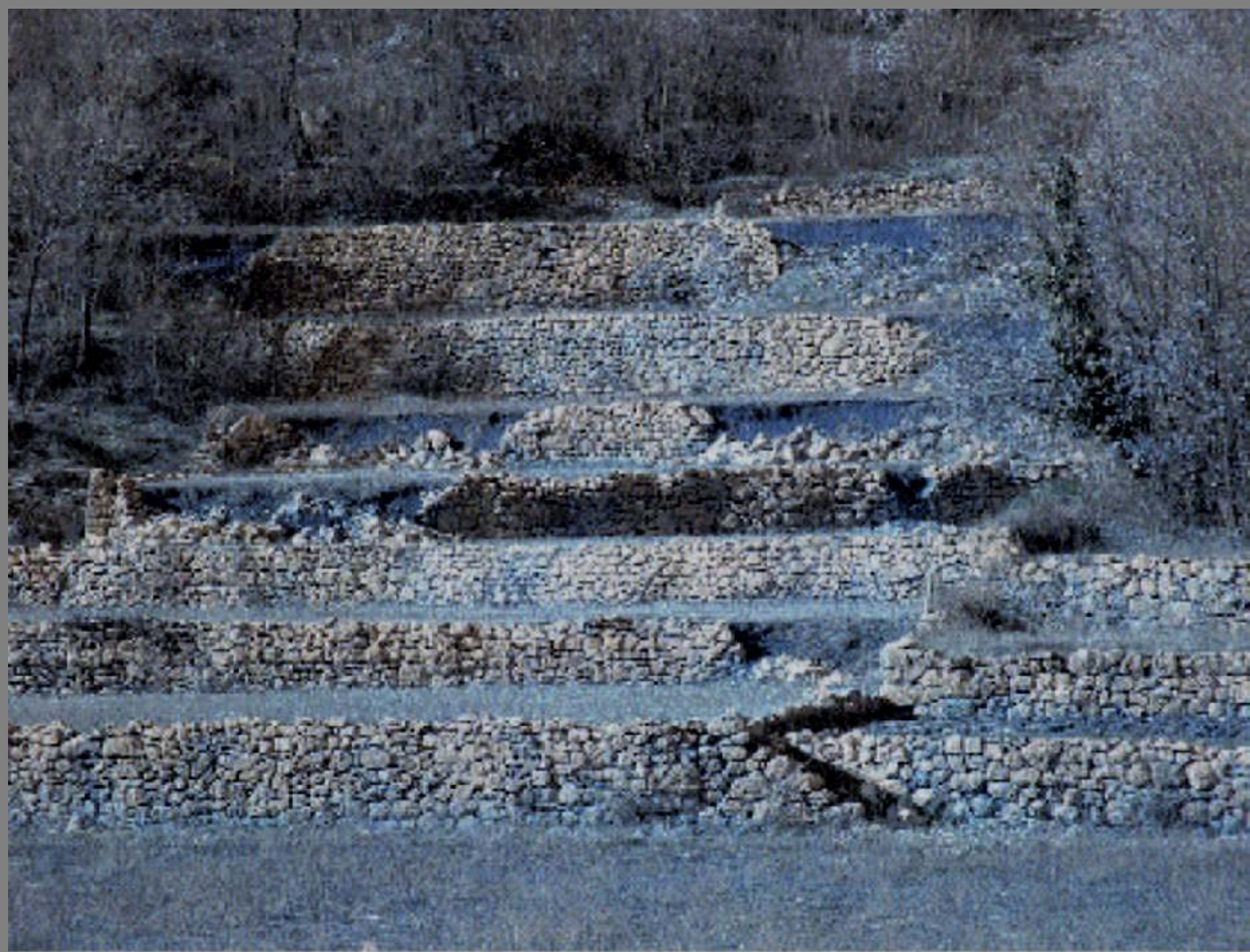




POLOŽAJ NASELJA















© A. Gospić





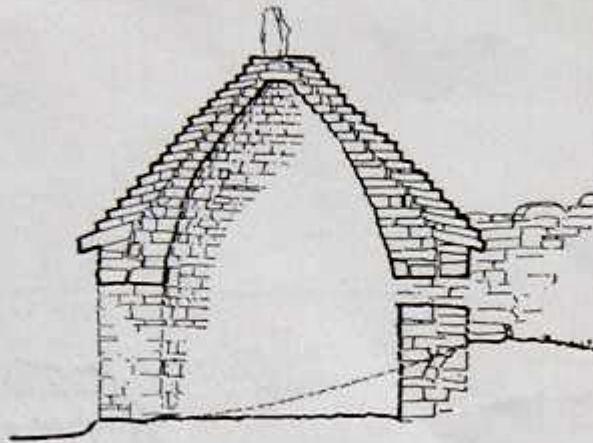




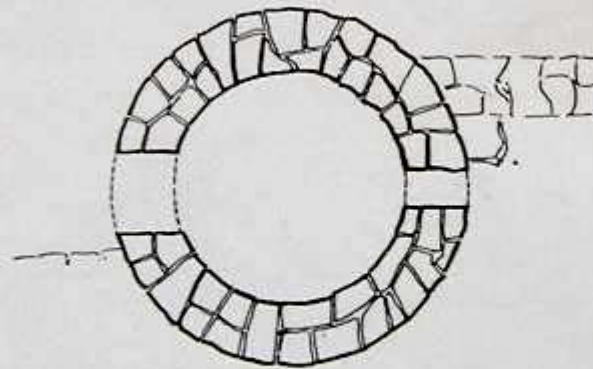




Dalmatinska bunja



77a Presjek

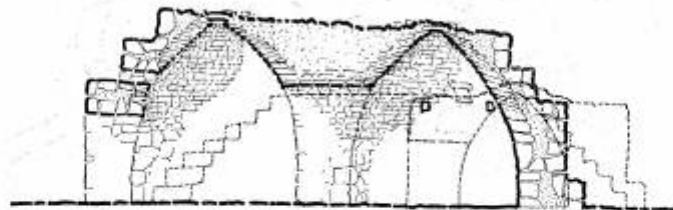


77b Tlocrt

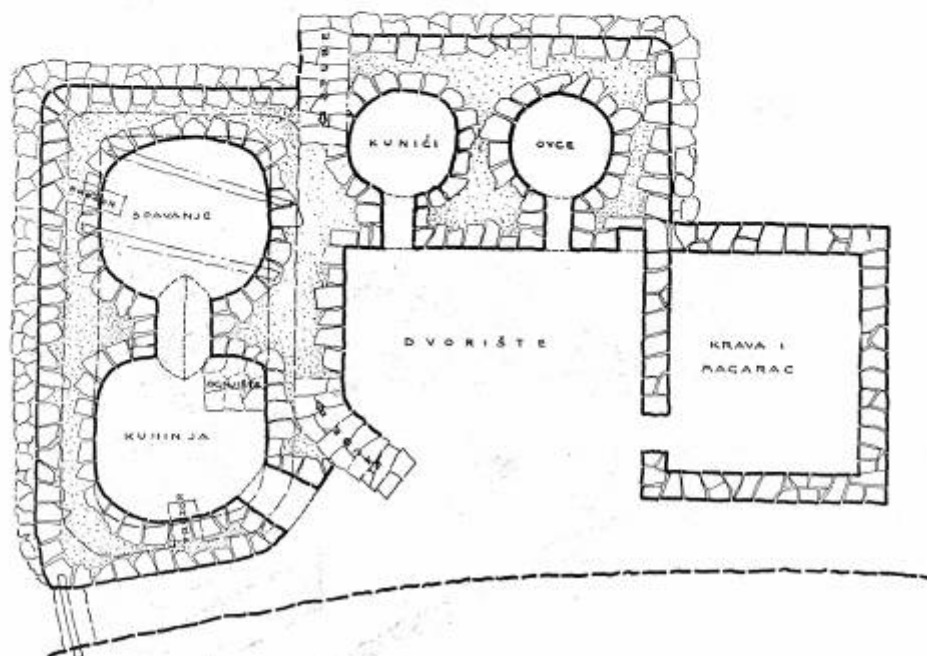
Dalmatinska bunja



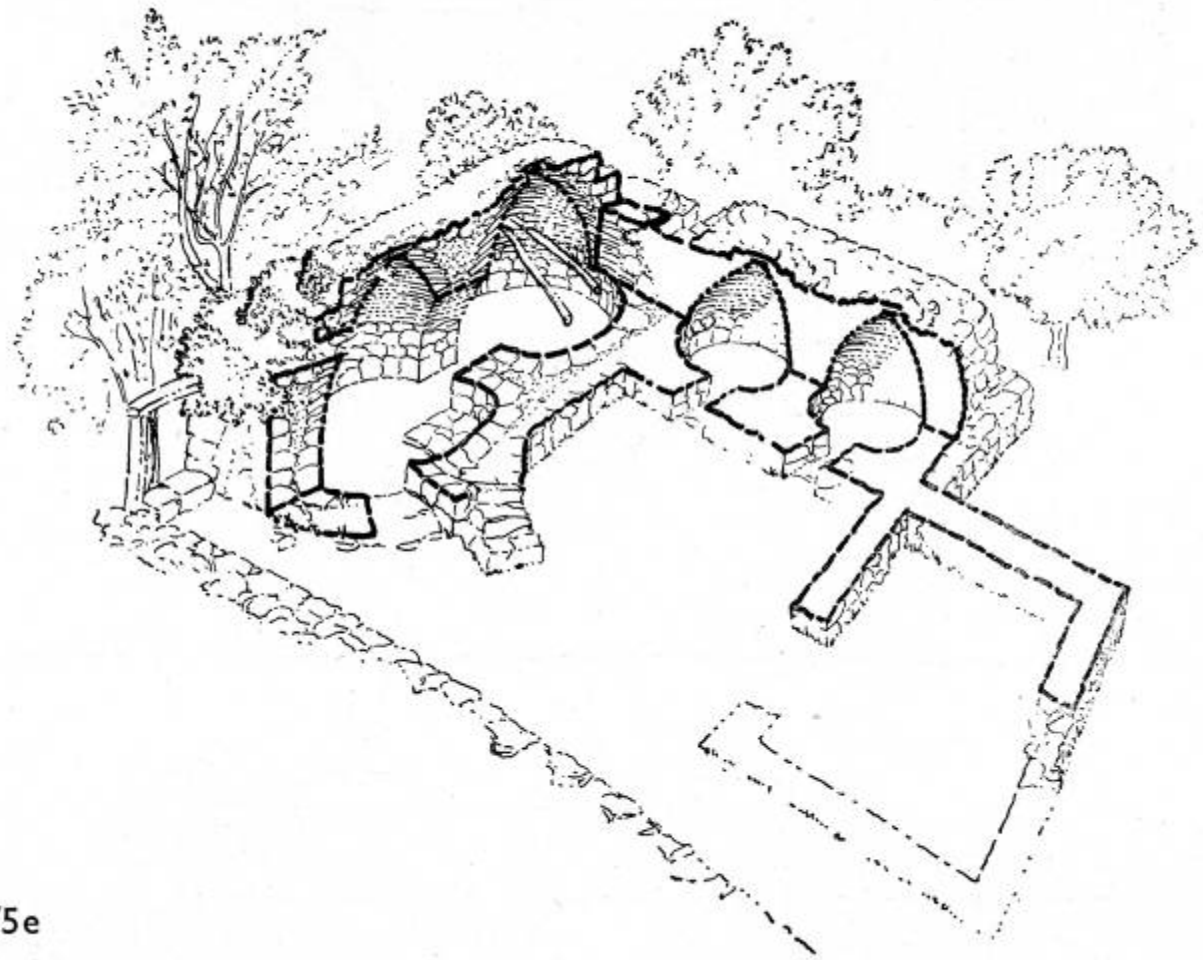
75a Uzdužni presjek



75b Poprečni presjek



75c Tlocrt

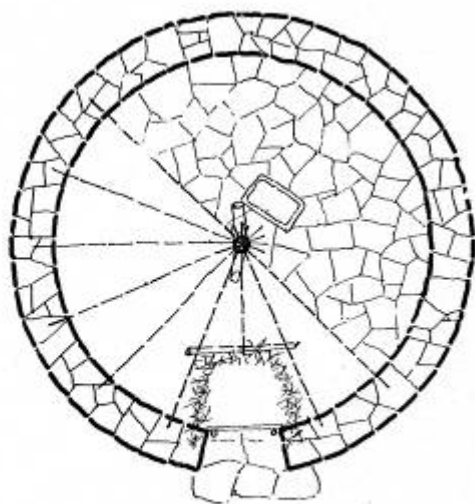


75e





79a Pogled



79b Tlocrt



79c Presjek





KULTURA NURAGHI NA SARDINIJI, BRONČANO I
ŽELJEZNO DOBA



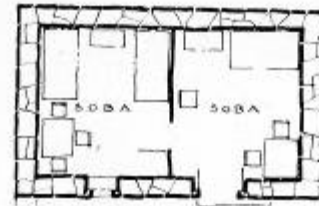
KULTURA NURIAGHI NA
SARDINIJI, BRONČANO I
ŽELJEZNO DOBA



Truli, Alberobello, Južna Italija



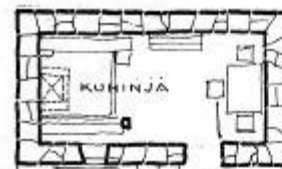
492a



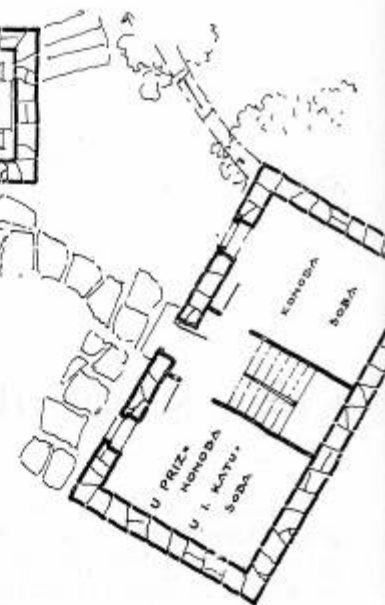
492b



493a



DVORIŠTE



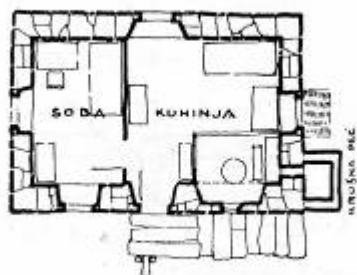
493b







500a Pogled



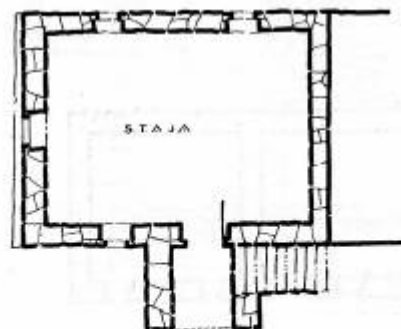
500b Prizemlje



500c Podrum



501a Prizemlje



501b Podrum



501c Pogled













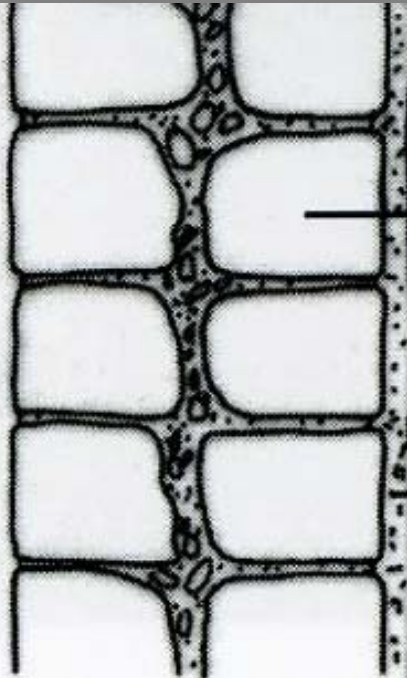












*kameni zid
s dva lica*

*žbukano
unutrašnje
lice zida*



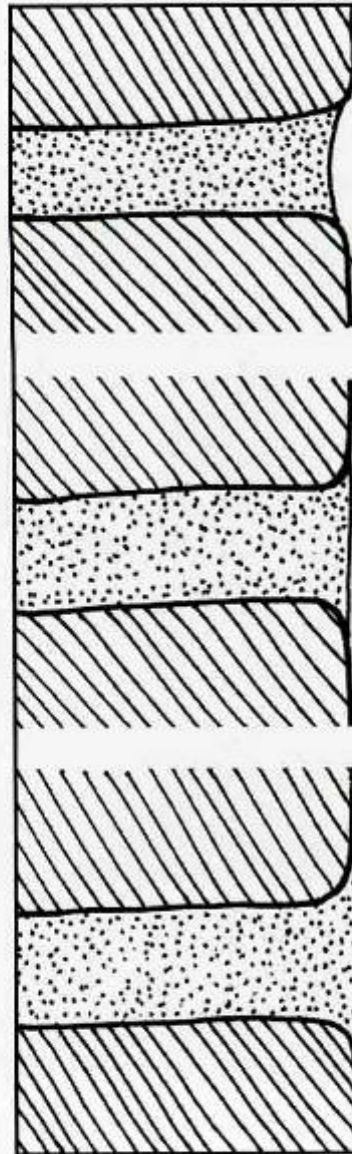


Veliki kameni blokovi, Kostanje



Veliki kameni blokovi, Kostanje





PRAVILNO
*fuga upuštena
nekoliko milimetara*

NEPRAVILNO
fuga u ravnini zida

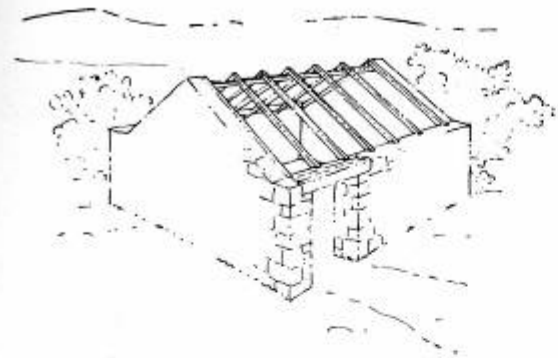
NEPRAVILNO
izbočena fuga



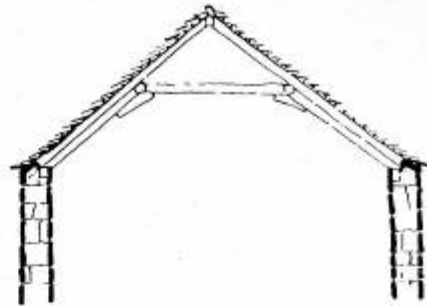


Copyright © Zoran Alajbeg





434



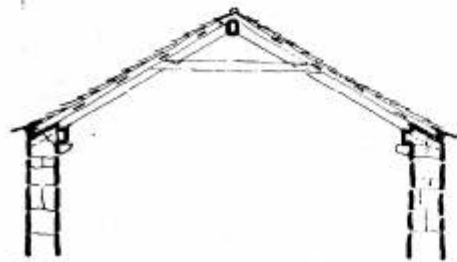
437



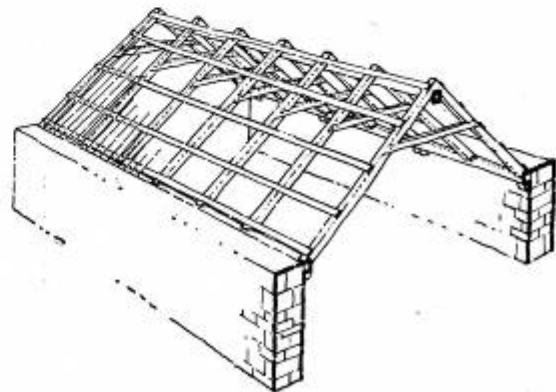
438



435



436

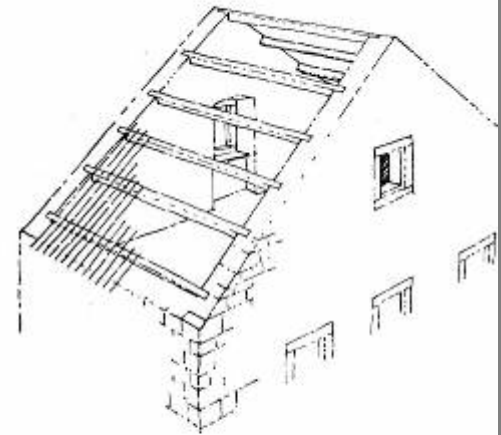


439

456



457



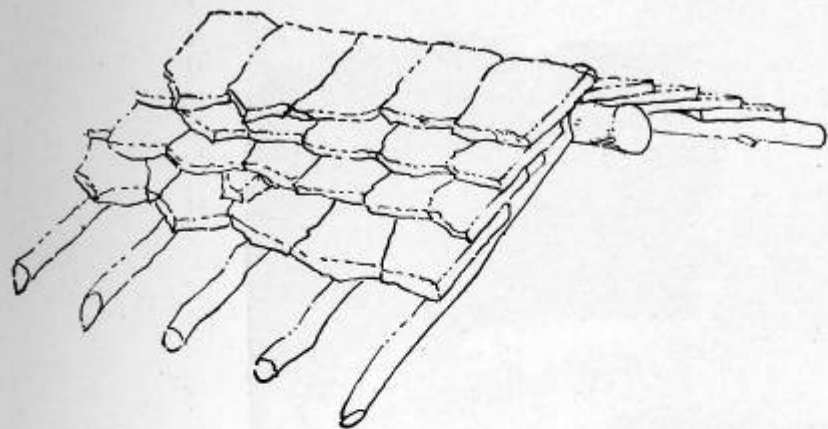
458



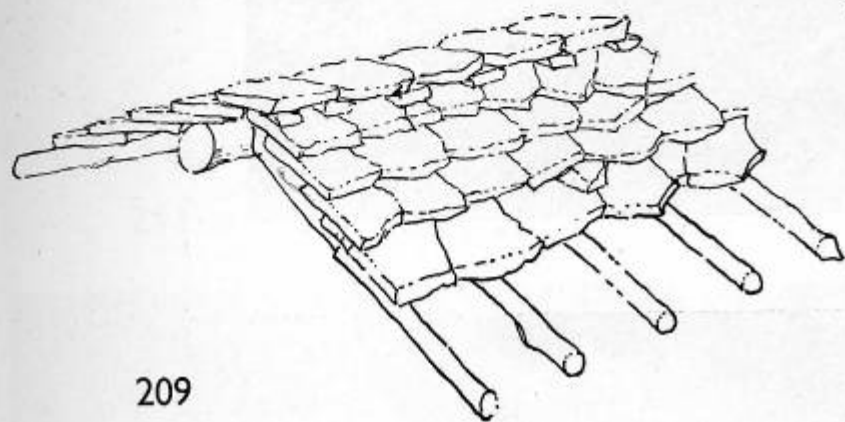
459



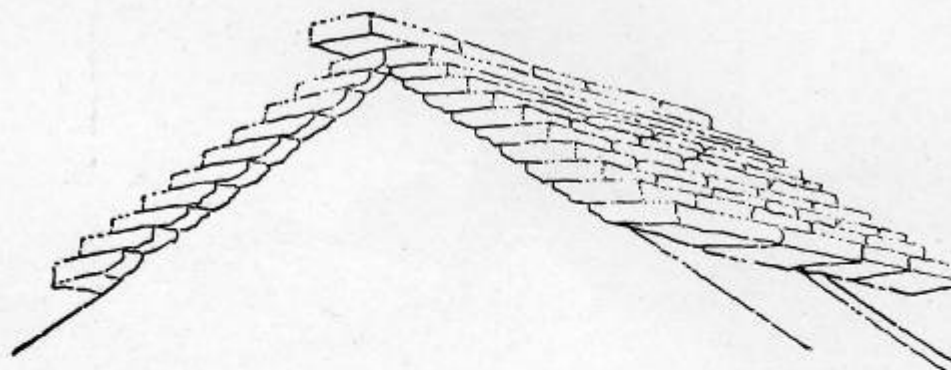
460



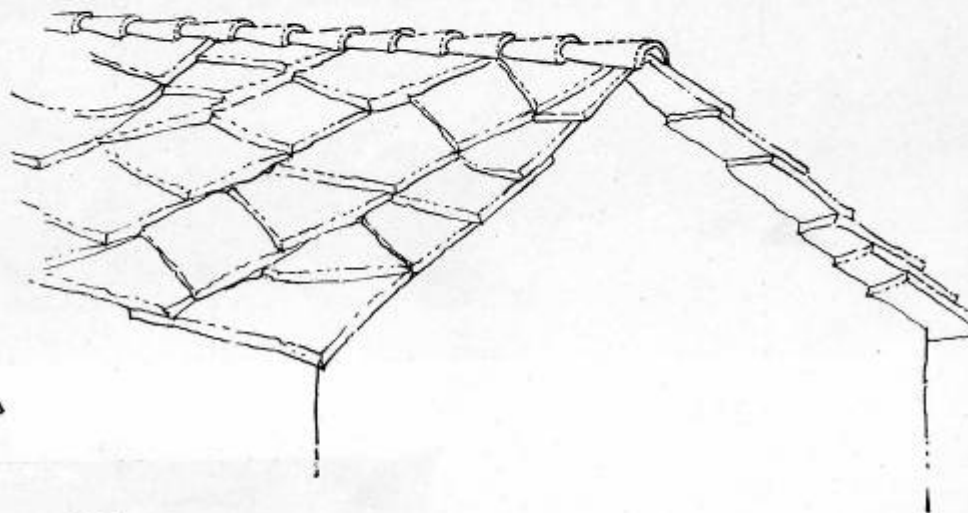
207



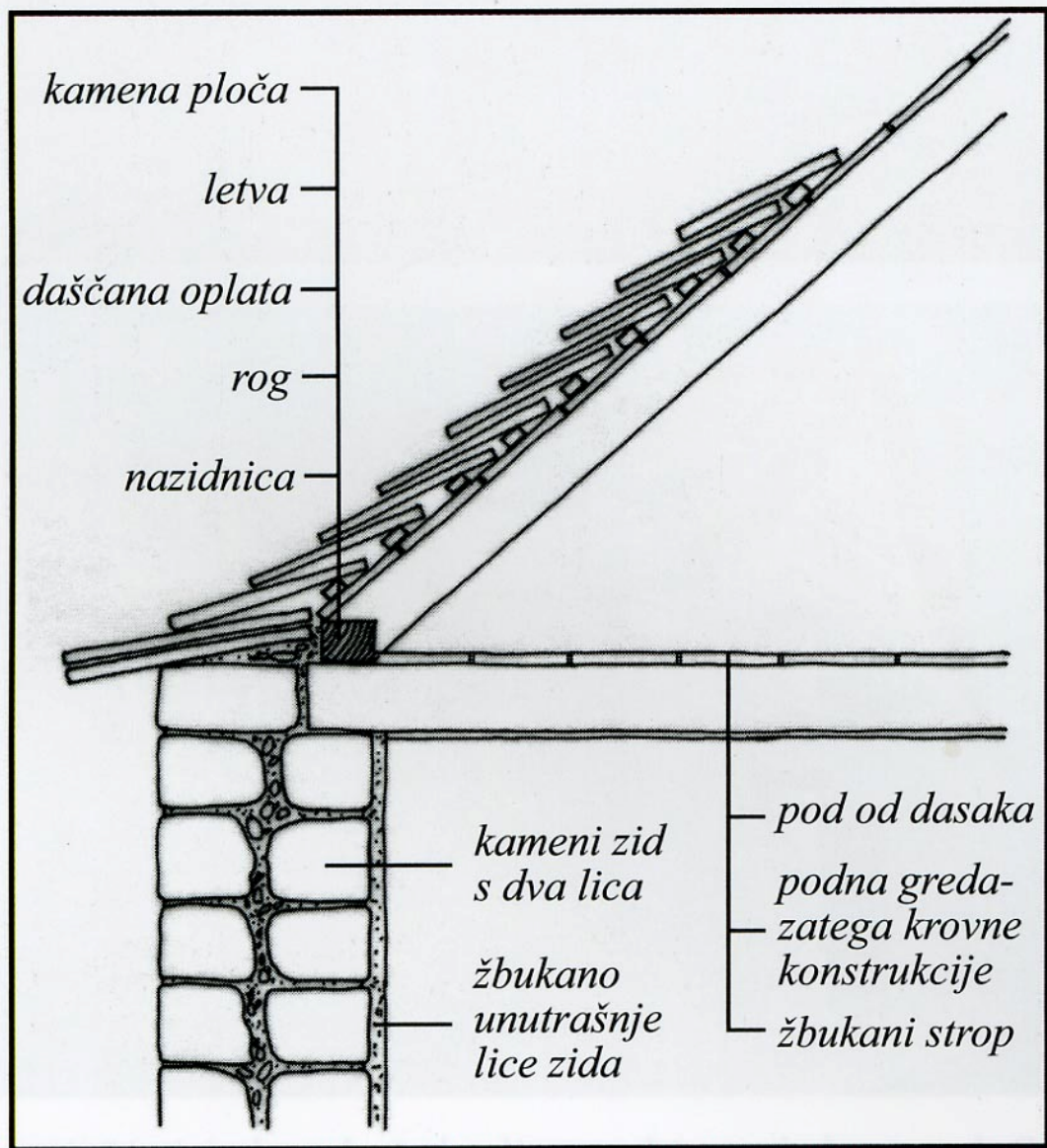
209



208



210



*Detalj presjeka drvenog krovišta s kamenim
 pokrovom.*









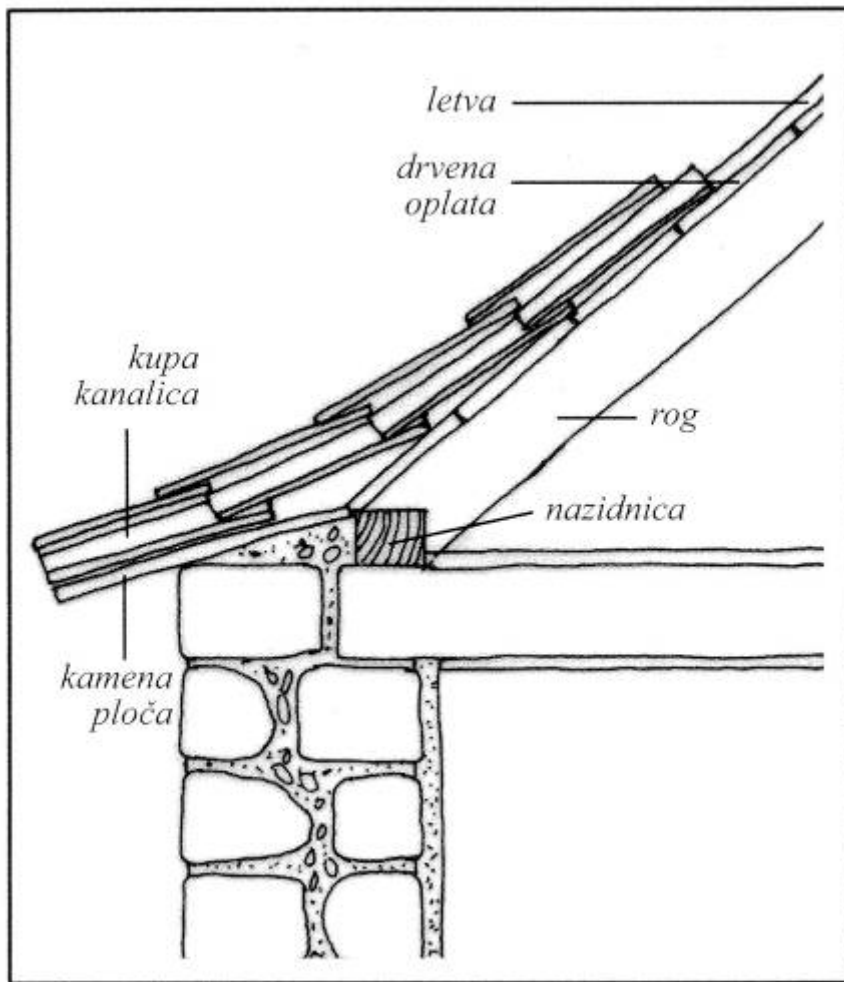




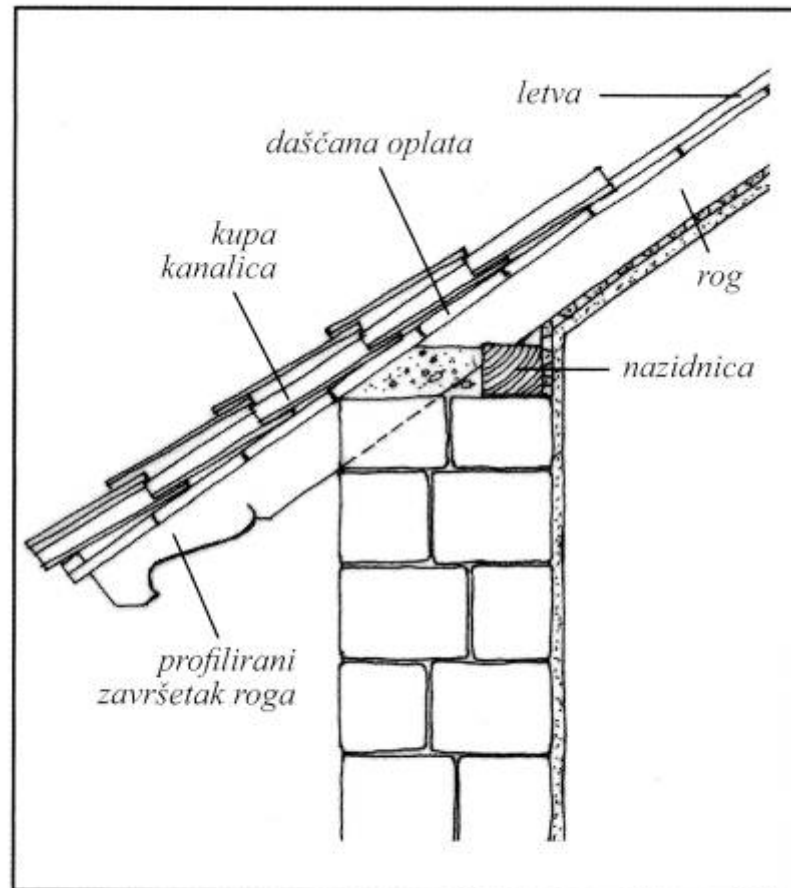




Polaganje kupe kanalice preko dvostrukog letvanja. Spoj krova i susjednog zida pokriven je nizom donjih kupa.



Detalj strehe od kamenih ploča.

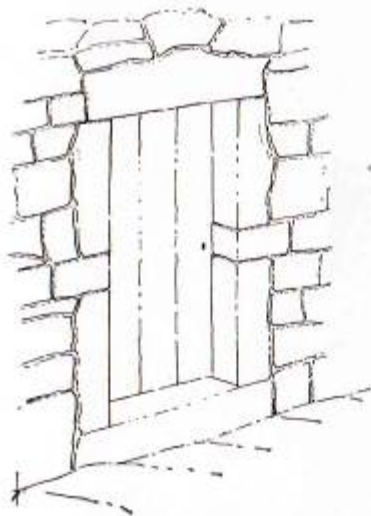


Drvena streha s profiliranim rogovima često ima i limeni oluk.

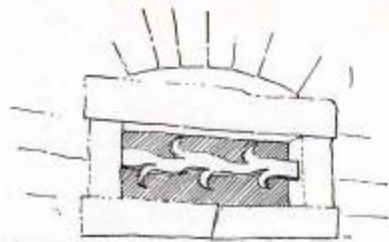




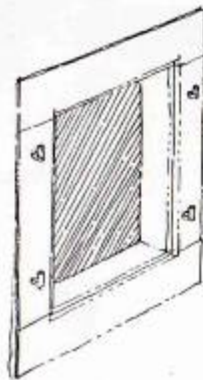




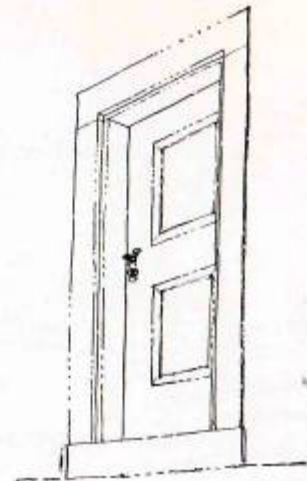
114



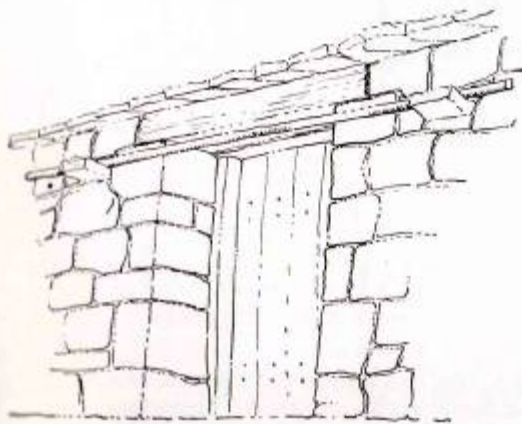
115a



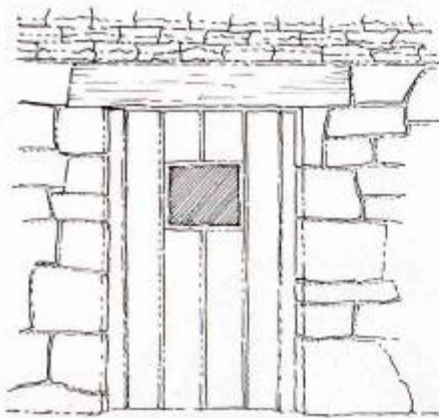
115b



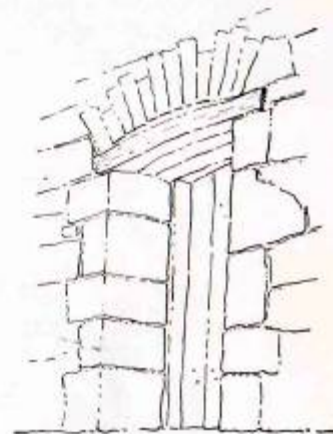
116



117



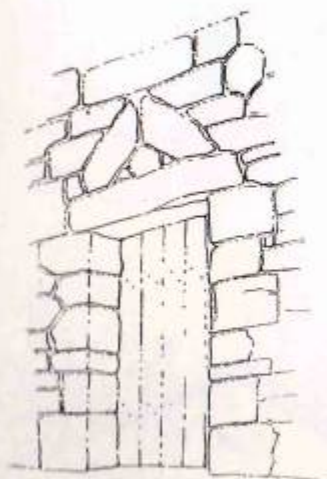
118



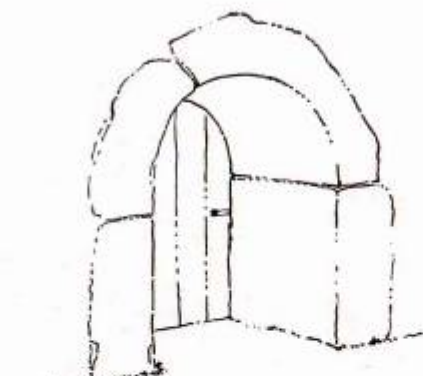
119



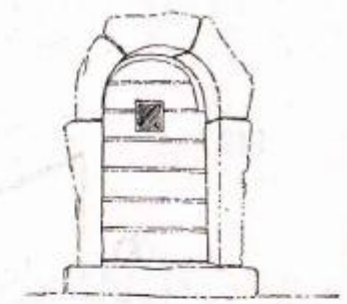
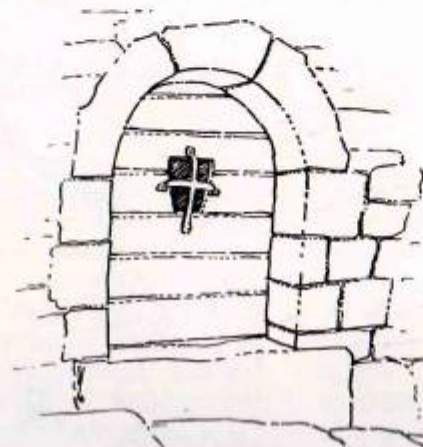
133



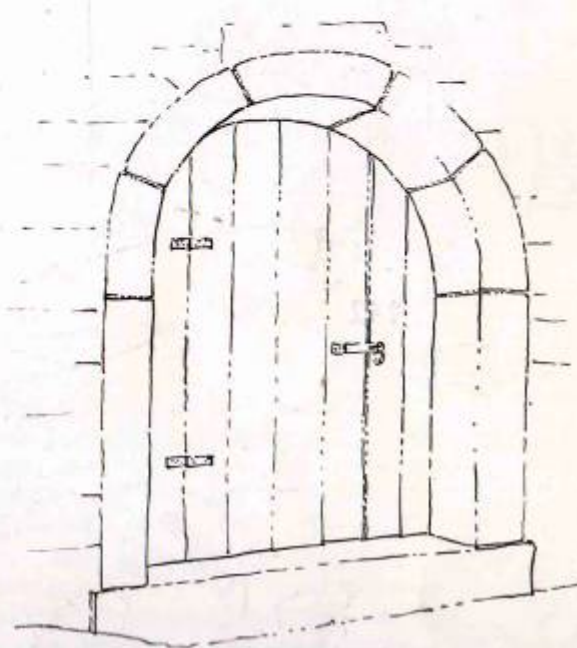
135



136



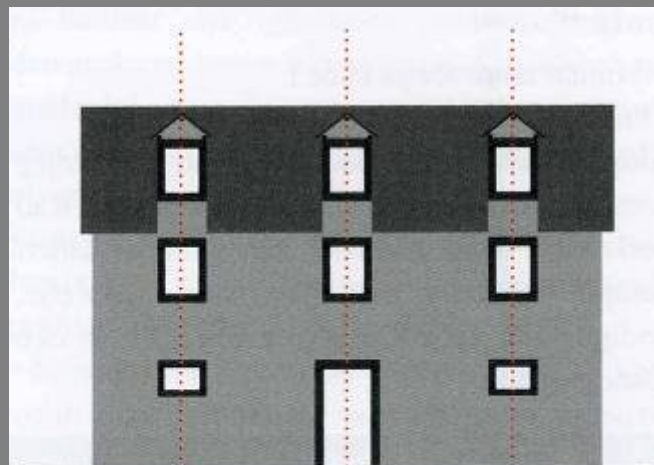
137



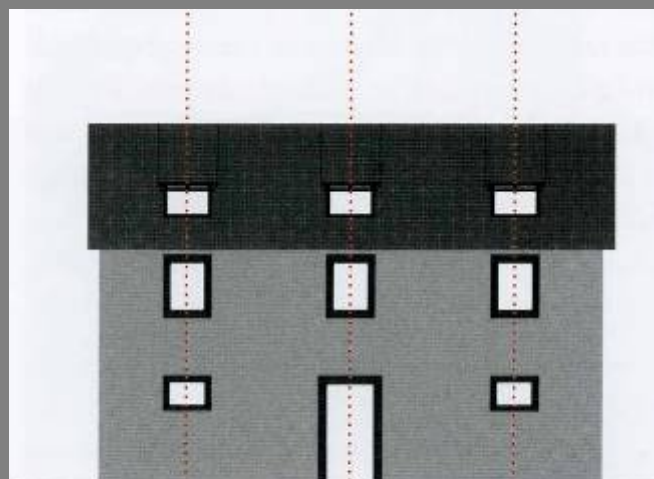




KROVNI PROZORI - LUMINARI



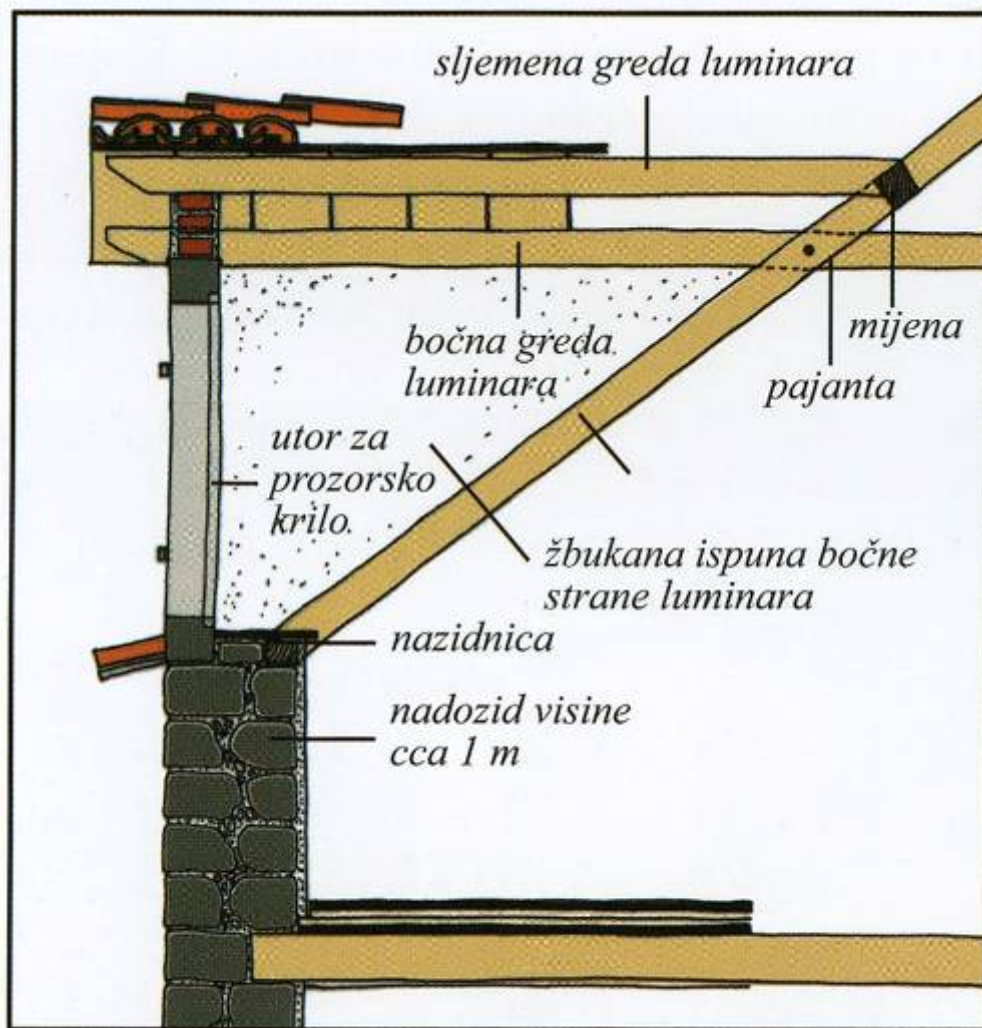
Na dvostrešnom krovu bez nadozida postavljeni su dvostrešni luminari s parapetima u osi donjih prozora.



Na dvostrešnom krovu bez nadozida postavljeni su jednostrešni luminari uvučeni od pročelja.

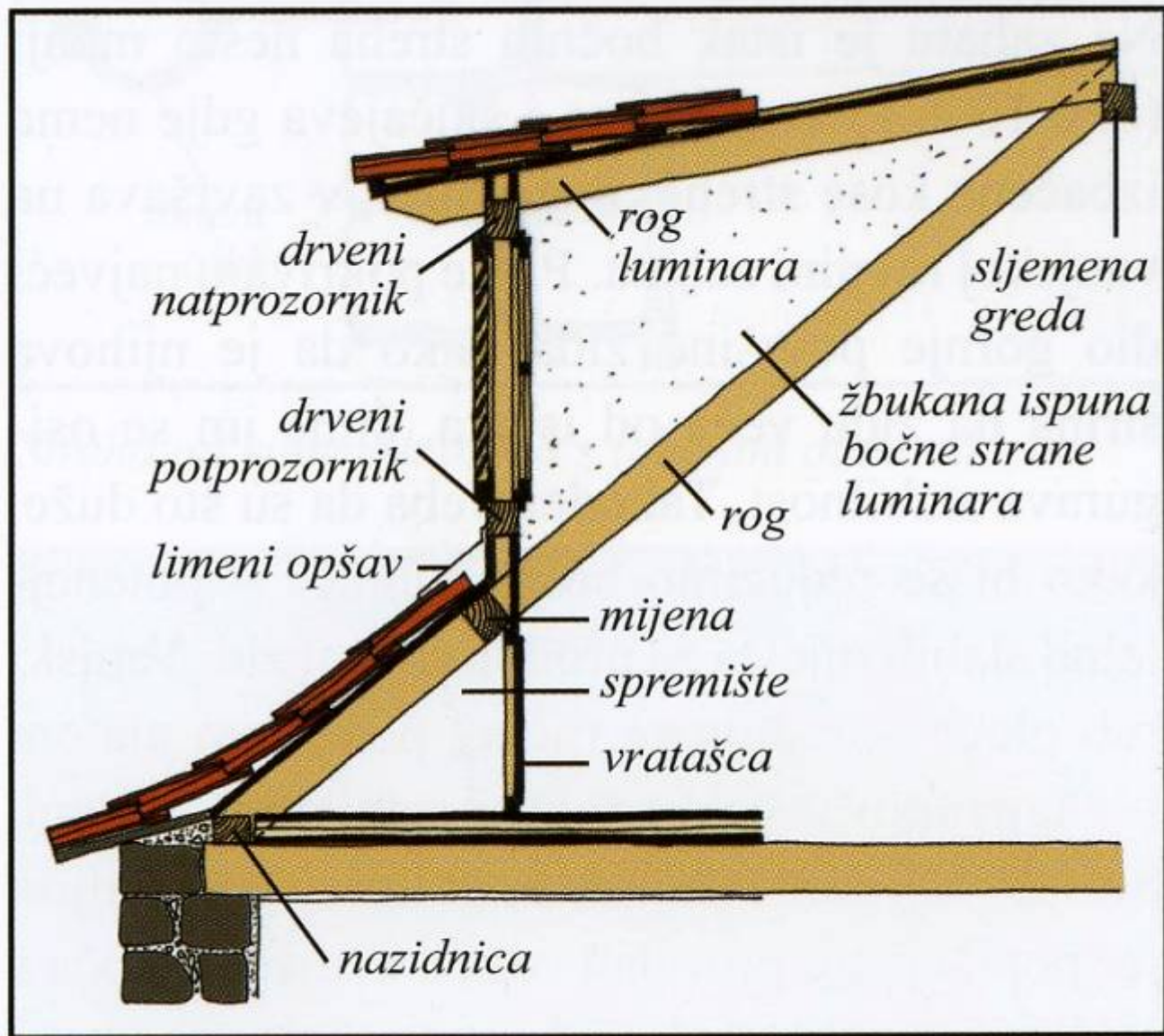


Luminar s parapetom u ravni pročelja.



Presjek dvostrešnog luminara na pročelju.



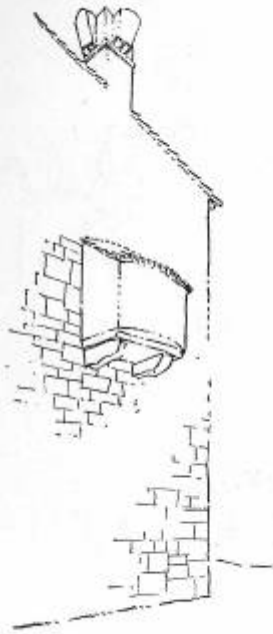


Presjek jednostrešnog luminara uvučenog od pročelja.





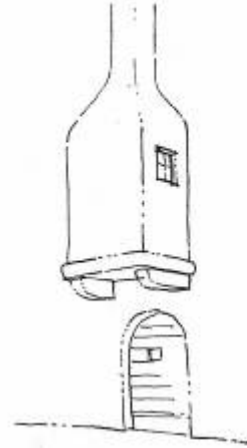




194



195



196



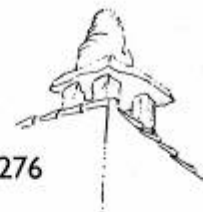
273



274



275



276



277



278



279



280



281



282



283



284



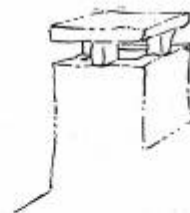
258



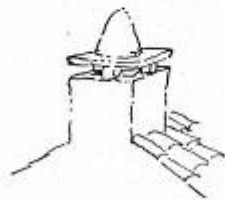
286



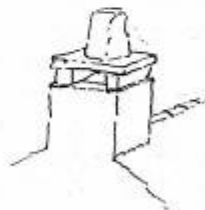
287



288



289



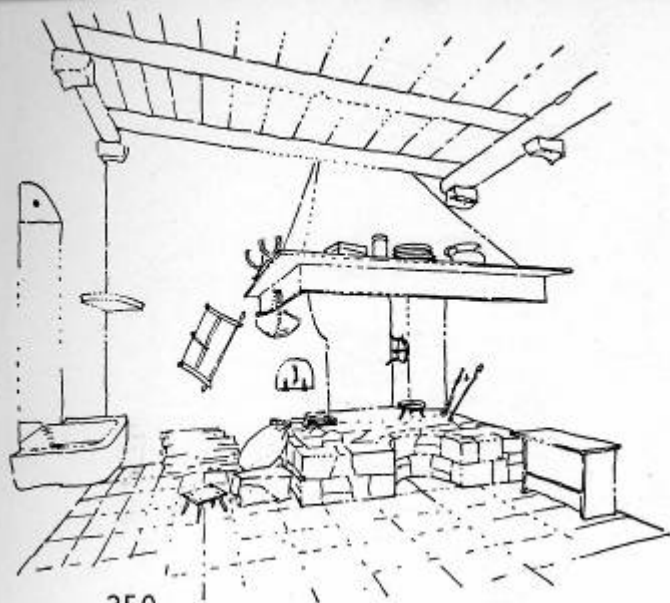
290



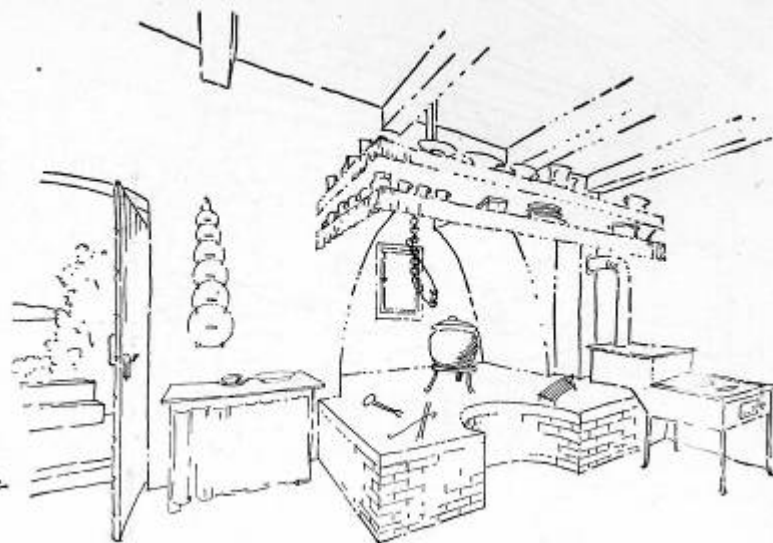
291



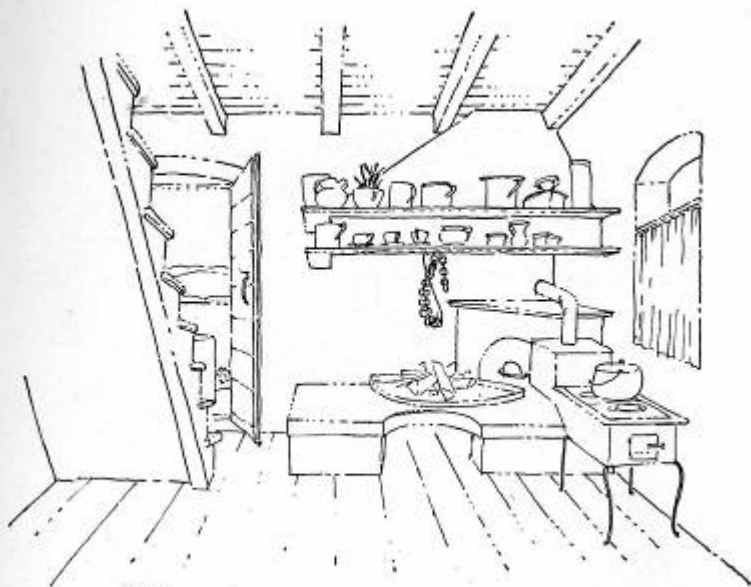
292



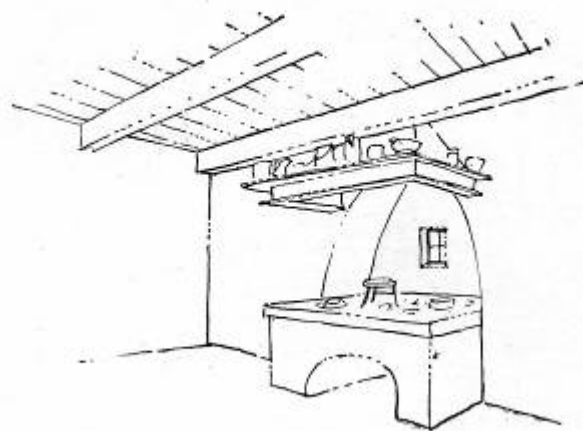
250



251



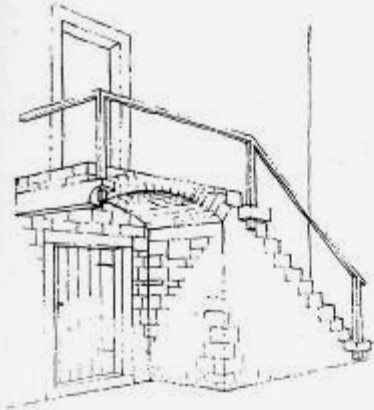
252



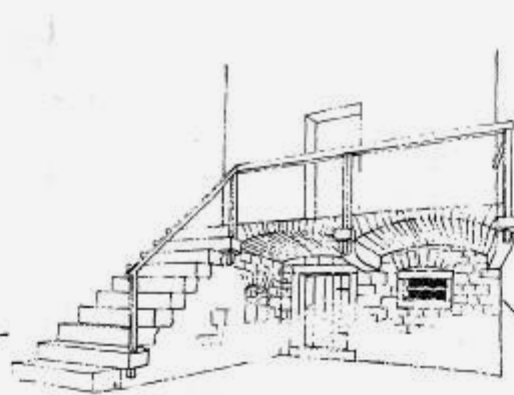
253



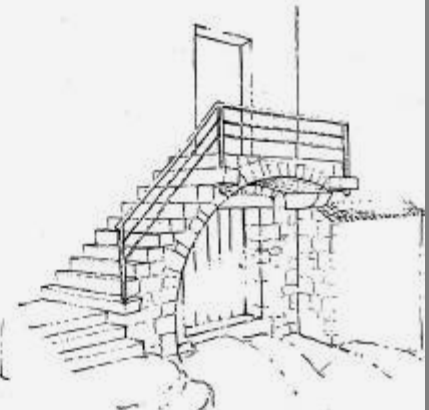
VANJSKO STUBIŠTE - BALATURA



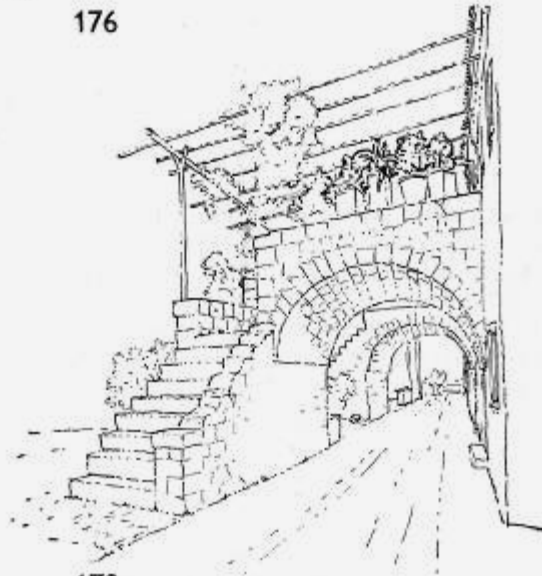
176



177



178



179



180









STOLARIJA





NAKNADNE INTERVENCIJE











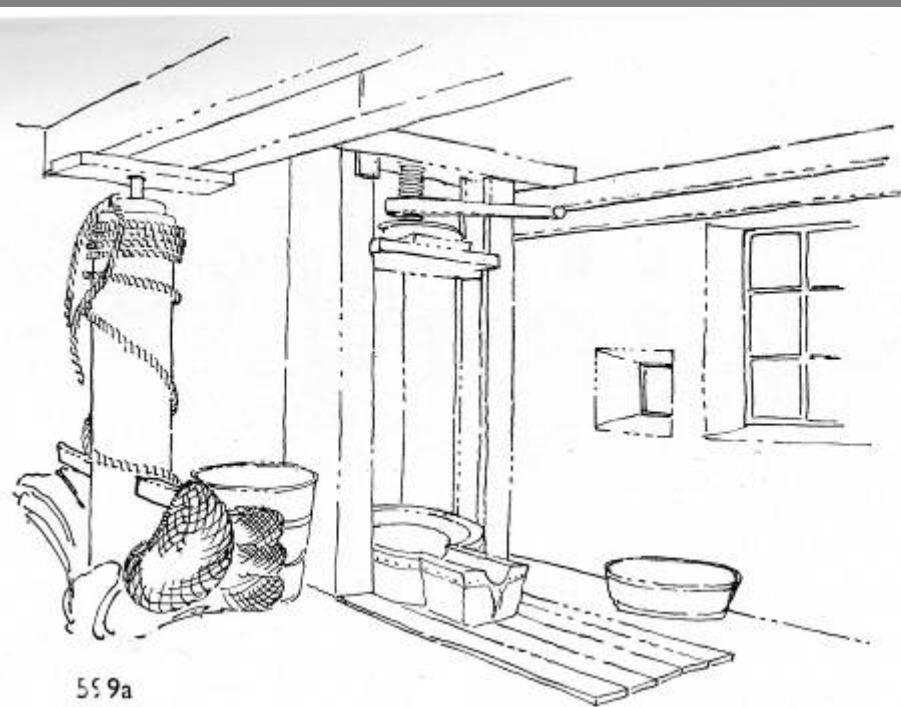




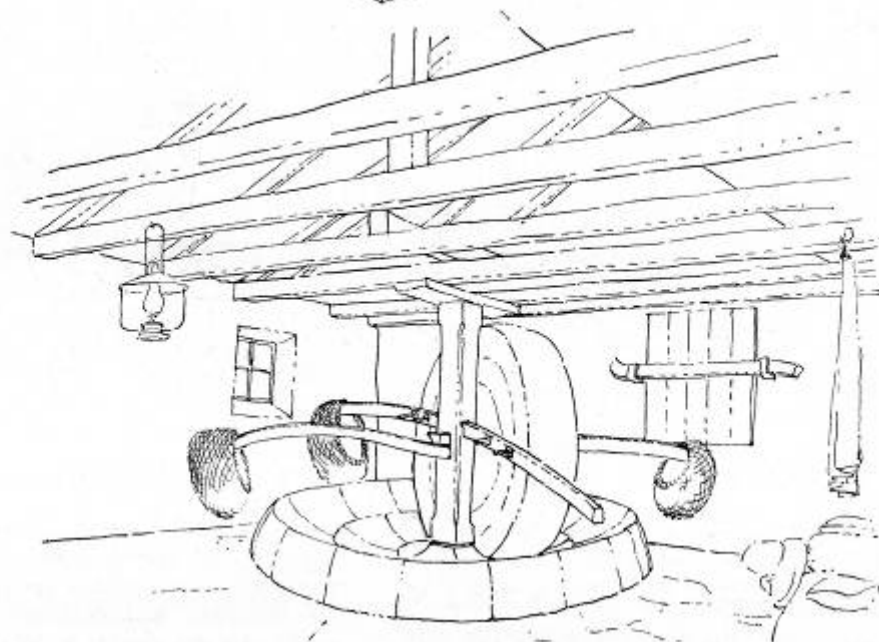




PROIZVODNJA ULJA I VINA



599a



599b





SRETAN BOZIC ♥ SRETNA NOVA GODINA















Bibliografija:

A. Freudenreich: Narod gradi na ogoljenom krasu, Zagreb-Beograd 1962.

J. Belamarić i dr.: Pouke baštine za gradnju u hrvatskom priobalju, Zagreb 2007.